

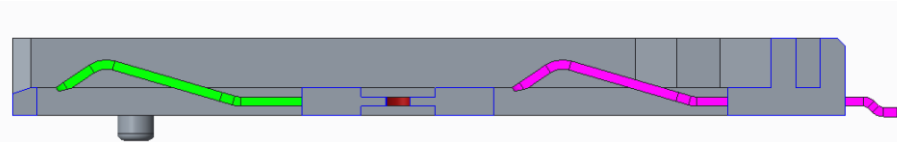


**SIM8065 Products Enhancements
(Now rebranded as SIM8066)**

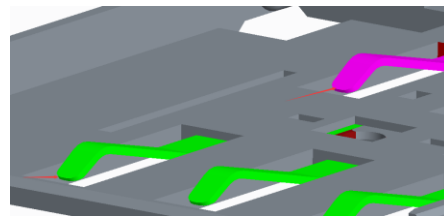
28th July 2021

Revised Contact Design for Improved Robustness

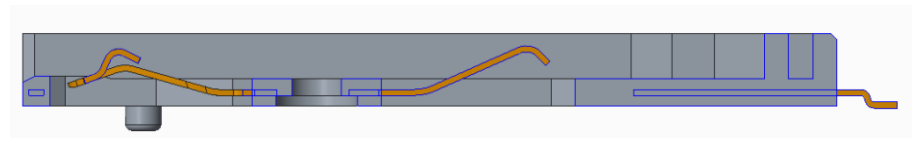
SIM8065 Rev A2



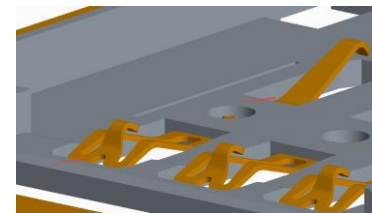
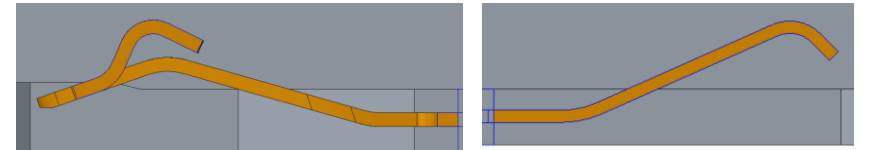
Card insertion direction



SIM8066 Rev A



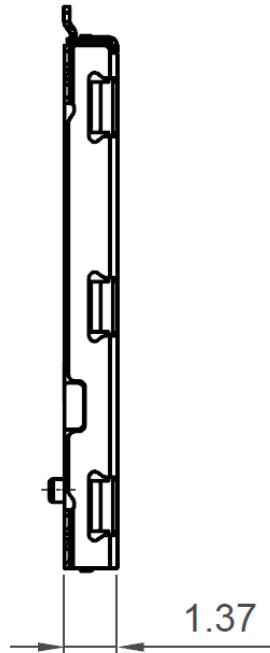
Card insertion direction



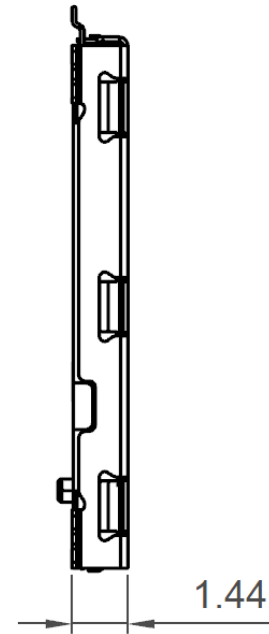
- Contact tip on the front row of contacts has been lowered to eliminate any potential for card stubbing.
- Contact direction on the second row of contacts has been reversed to minimize contact deflection.
- The revised design enhances the robustness of the connector, thereby eliminating the risk of card damage. Additionally, the redesign removes need for additional PCB preparation work.

Key Connector height / profile maintained

SIM8065 Rev A2



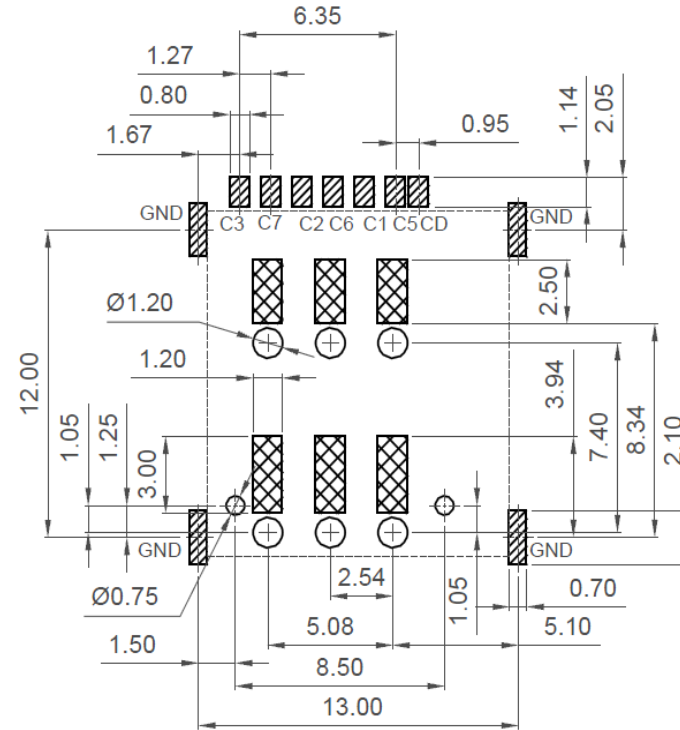
SIM8066 Rev A



Note that the difference on the height / profile dimension is still within original drawing tolerances.

PCB Preparation reduced and basic footprint maintained

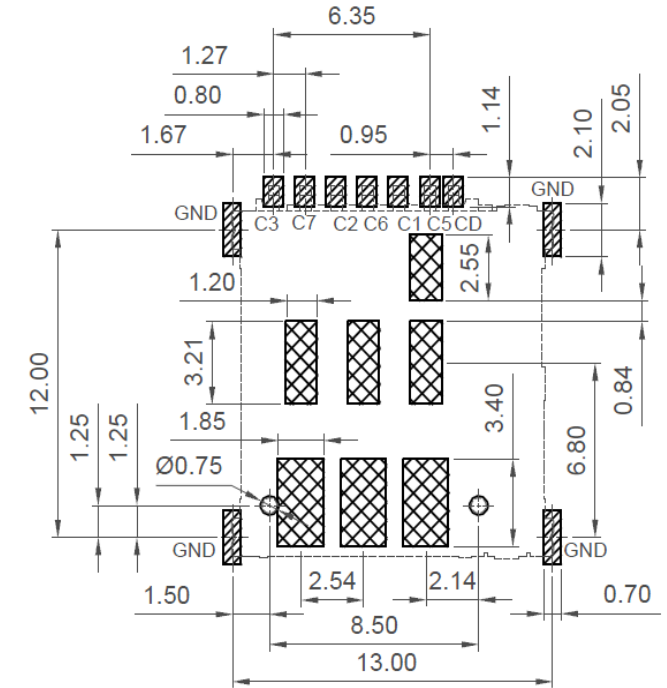
SIM8065 Rev A2



Recommended PCB Layout

(Viewed from Component Side - Tolerance:±0.05mm)
Solder Area Keep Out Area Component Outline

SIM8066 Rev A



Recommended PCB Layout

(Viewed from Component Side - Tolerance:±0.05mm)
Solder Area Keep Out Area Component Outline

SIM8066

PCB preparation time and cost significantly reduced, as the previously required six contact clearance holes do not now need to be drilled. The *Keep Out* areas have changed. However, the solder pad layout remains the same. Both 3D models and PCB footprint are available to download here:

<https://gct.co/connector/sim8066>